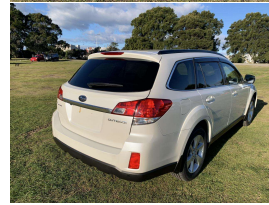




2013 Subaru Outback 2.5 EYESIGHT



VEHICLE INFORMATION

Cash Price

Includes GST,
Registration &
Licensing

\$15,990

Finance this vehicle
from only

\$106.89

per week*

Total Amount Payable

\$22,234.02



Body

5 door, Station Wagon

Odometer

108,786 km

Engine

2498 cc

Fuel Type

Petrol

Transmission

Auto, All Wheel Drive

Reg No.

-

Ext Colour

WHITE-PEARL

History

Ex-Overseas

Seats

5 seats, Cloth

Interior

Grey, Cloth

Exterior Features

- » alloy wheels
- » Driving lights
- » Electric Mirrors (Retractable)
- » Face Lift Model
- » Keyless entry
- » Parking Sensors
- » Privacy glass
- » Rear Wiper
- » Reversing camera

Interior Features

- » 8 Airbags
- » Air Conditioning
- » bluetooth
- » Cd player (single)
- » Central Locking
- » Child seat anchor points
- » Climate Control
- » Electric Mirrors
- » Electric Seats

Mechanical Features

- » AA Appraised
- » ABS Braking
- » Adaptive Cruise Control
- » Auto stop
- » Automatic headlights
- » ELECTRIC PARKING BRAKE
- » Eyesight Technology
- » Forward Collision Warning (FCW)
- » Keyless start

AA Motoring

Preferred Dealer

AA Motoring

Safety Certified



Over 25 years servicing Tauranga and the Bay of Plenty, and 20,000+ quality cars sold nationwide.



Car Connexion, Phone 07 571 1335, Email sales@ccx.co.nz
141 Second Avenue, Tauranga 3110, New Zealand
www.ccx.co.nz

* Finance calculation based on a 48 month term, no deposit and with an example annual fixed interest rate of 14.75%. Actual interest rate may be higher or lower. Includes an establishment fee of \$423.00 and a monthly maintenance fee of \$8.50. Full term total amount payable of \$22,234.02. Estimate only, not an offer of finance. Terms, conditions and lending criteria apply.